

# MONTHLY MEMBERSHIP PROGRESS REPORT

LOCATION KENTUCKY

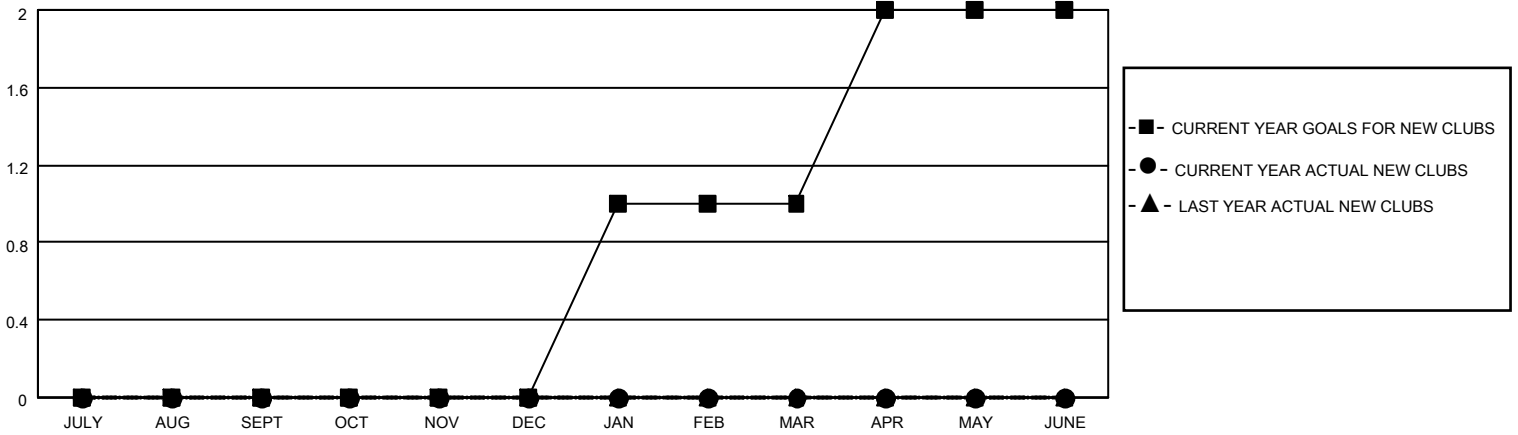
District 43 Y

Results as of: 7/31/2022

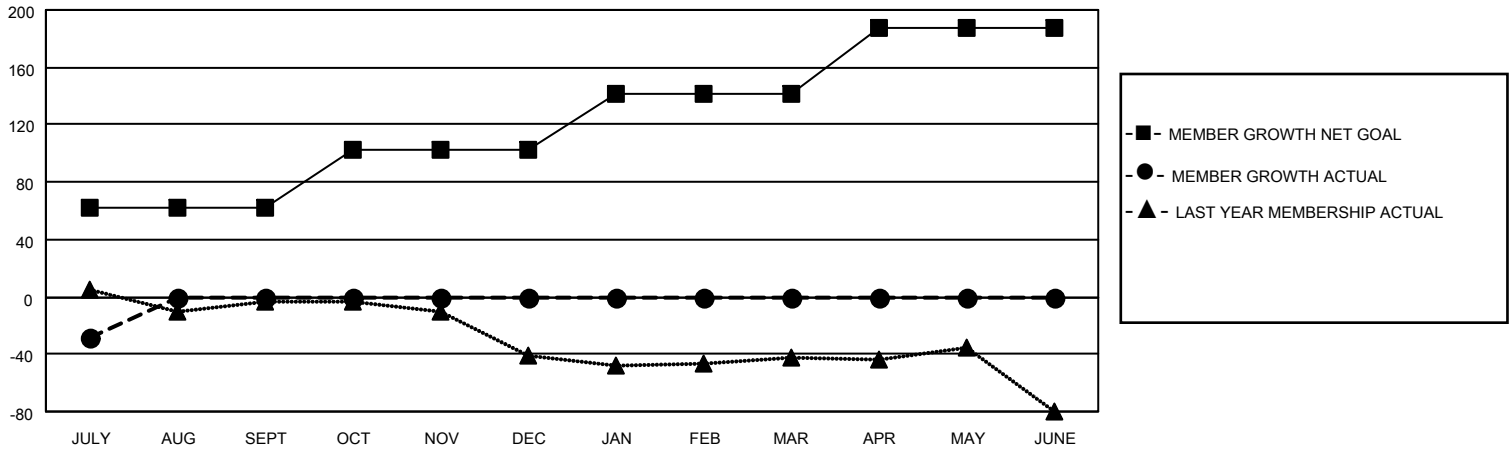
Clubs			
RESULTS FOR 2022-2023			
QUARTER	NEW CLUB GOAL	NEW CLUBS	DROPPED CLUBS
JULY/AUG/SEPT	0	0	1
OCT/NOV/DEC	0	0	0
JAN/FEB/MAR	1	0	0
APR/MAY/JUNE	1	0	0

Members			
RESULTS FOR 2022-2023			
QUARTER	MEMBER GROWTH NET GOAL	MEMBER GROWTH ACTUAL	DROPPED MEMBERS ACTUAL (including transfers)
JULY/AUG/SEPT	62	21	38
OCT/NOV/DEC	40	0	0
JAN/FEB/MAR	40	0	0
APR/MAY/JUNE	45	0	0

**GOALS AND ACTUAL NEW CLUBS CUMULATIVE**



**GOALS AND ACTUAL MEMBERS CUMULATIVE**



**DROPPED CLUBS: 1**

**6 CLUBS OF 80 ADDED 1 OR MORE NEW MEMBERS**

**GENDER DISTRIBUTION**

MALE	1,134 (65.97%)
FEMALE	584 (33.97%)
NON BINARY	0 (0.00%)
PREFER NOT TO ANSWER	1 (0.06%)

**DROPPED MEMBERS**

[CLICK HERE FOR CUMULATIVE MEMBERSHIP DATA](#)

DECEASED	3
CLUB CANCELLED	0
OTHER	35
<b>TOTAL</b>	<b>38</b>

TOTAL FAMILY UNIT MEMBERS	385
FAMILY MEMBERS PAYING HALF DUES	198